

LED Dots Light

LED point light source is a new type of energy-saving and environmentally friendly decorative lamp. It uses LED cold light source to emit light. It has a built-in microcomputer chip and can be programmed and controlled at will. Multiple synchronous changes, single color changes can also achieve synchronous colorful gradients, jumps, scans, and running lights. Full-color changing effects and multiple LED point light sources form a dot matrix screen. It can produce various pictures, text and animation effects. It is a supplement to linear light sources and floodlighting. Its beautiful appearance can meet the design requirements of point, line and surface decorations such as buildings.

LED Dots Screen— Features

1. Light cut-off from above angle

The low brightness above 0 degrees vertically reduces upward light pollution and reflects the light in the upward direction to the required application surface through the optical lens, increasing the luminous efficiency of the lamp

○ on the application surface

2. Wide left and right field of view

It solves the problem of the brightness when viewed from the front is brighter than when viewed from the side, and ensures the consistency of brightness when viewed from different angles ○

3. High brightness from far viewing angle

It solves the problem of dark brightness in far-sightedness and close brightness within a certain distance.

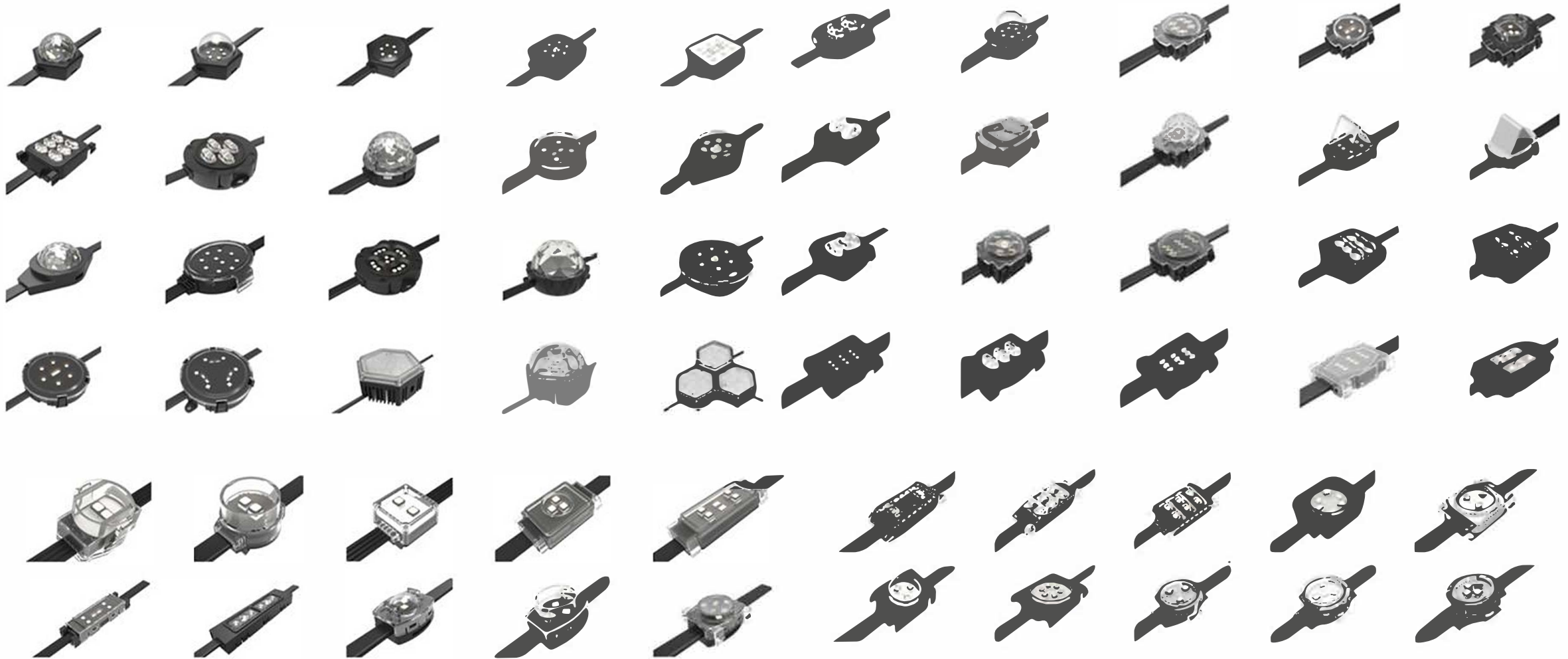
○



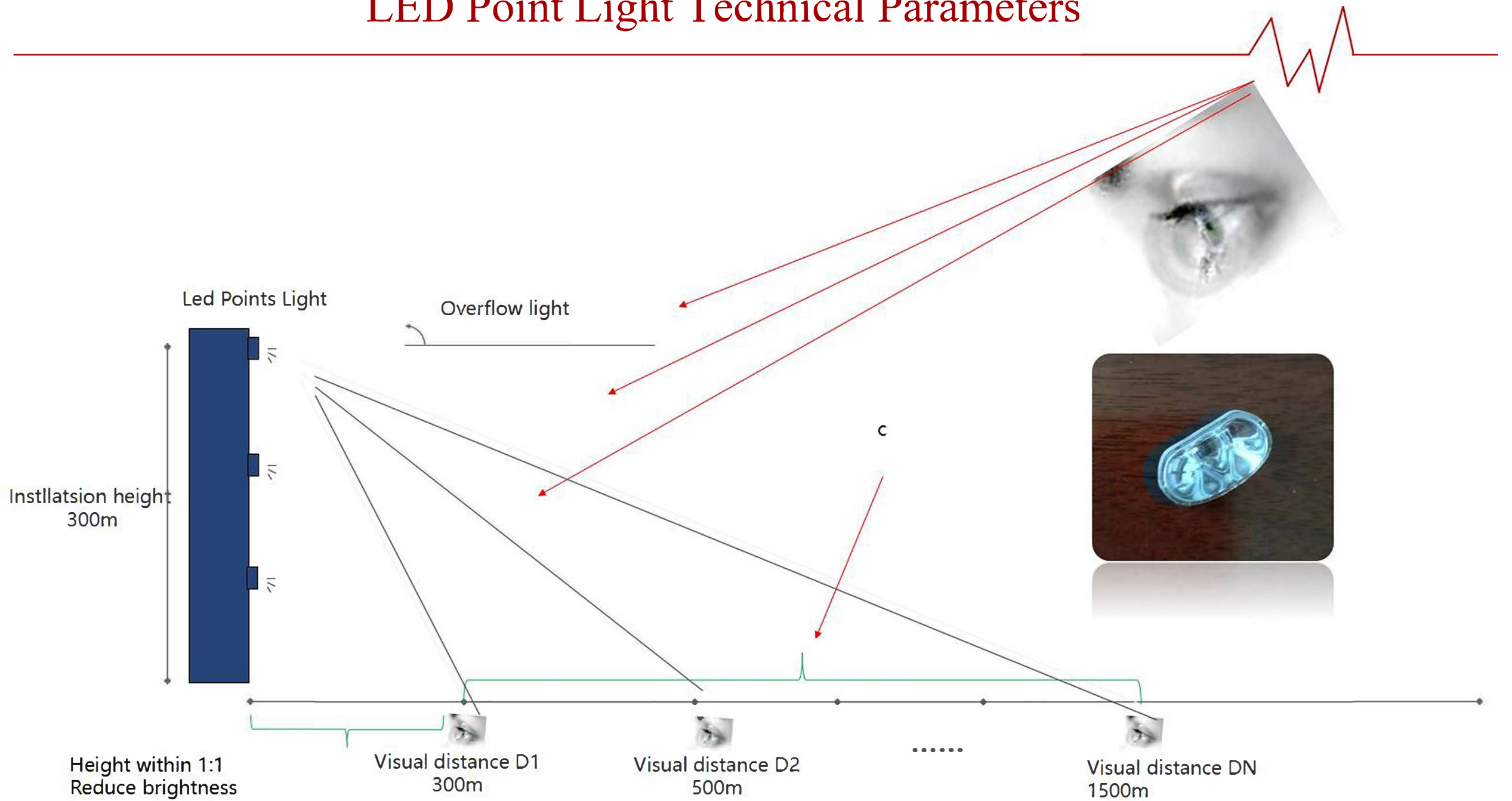
4. Anti-glare at near vision point

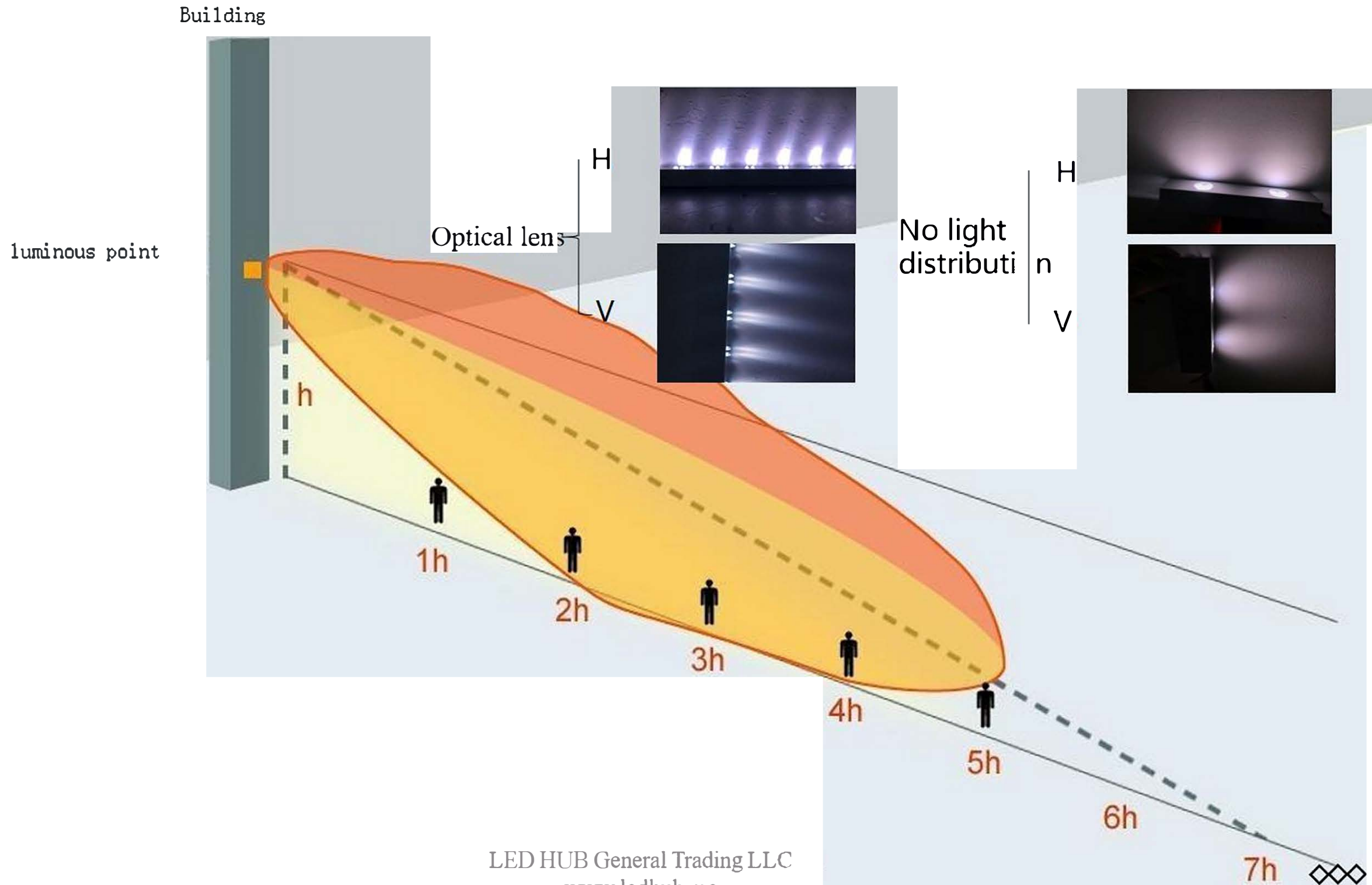
Solve the glare problem from near people's perspective ○

LED Dots Screen— Products

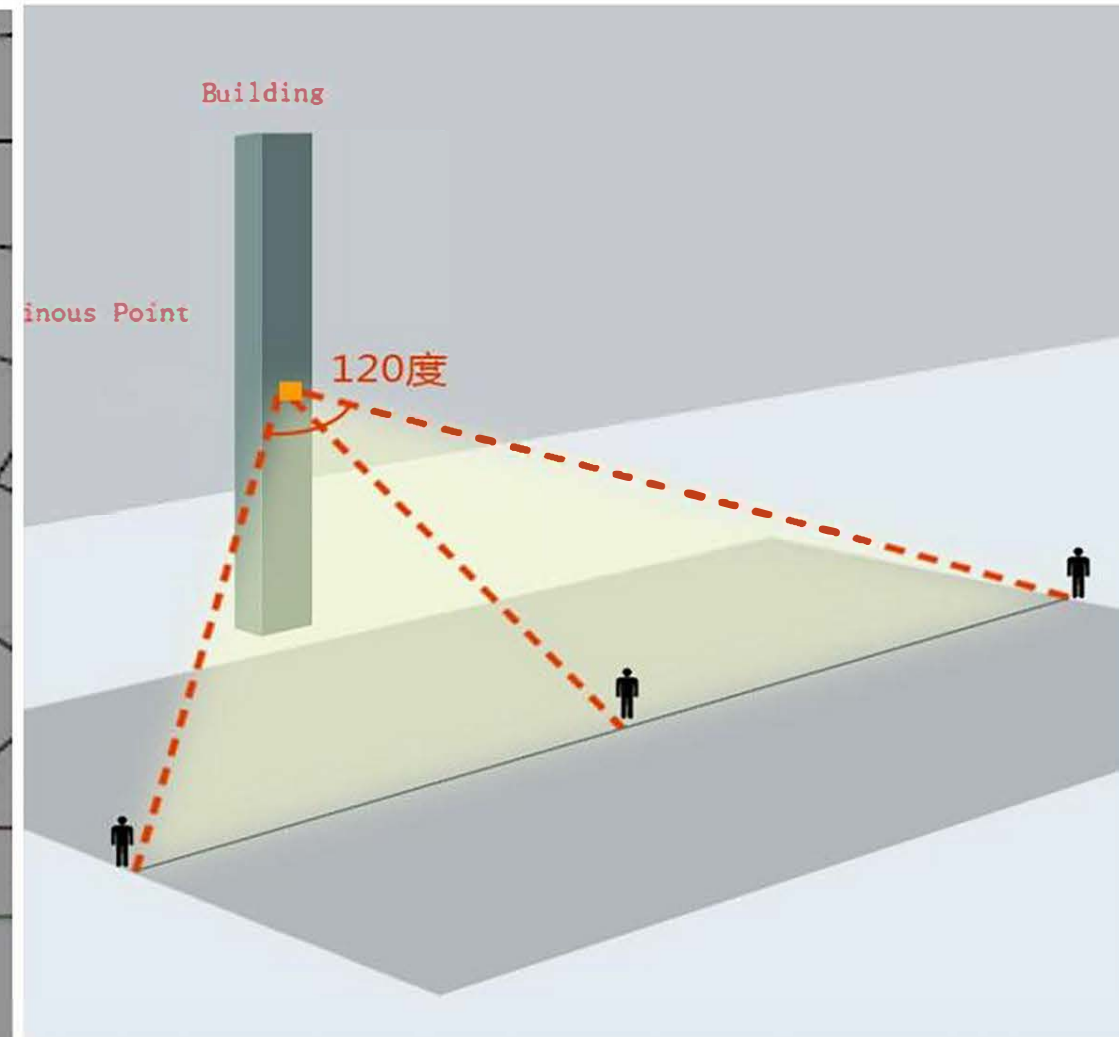
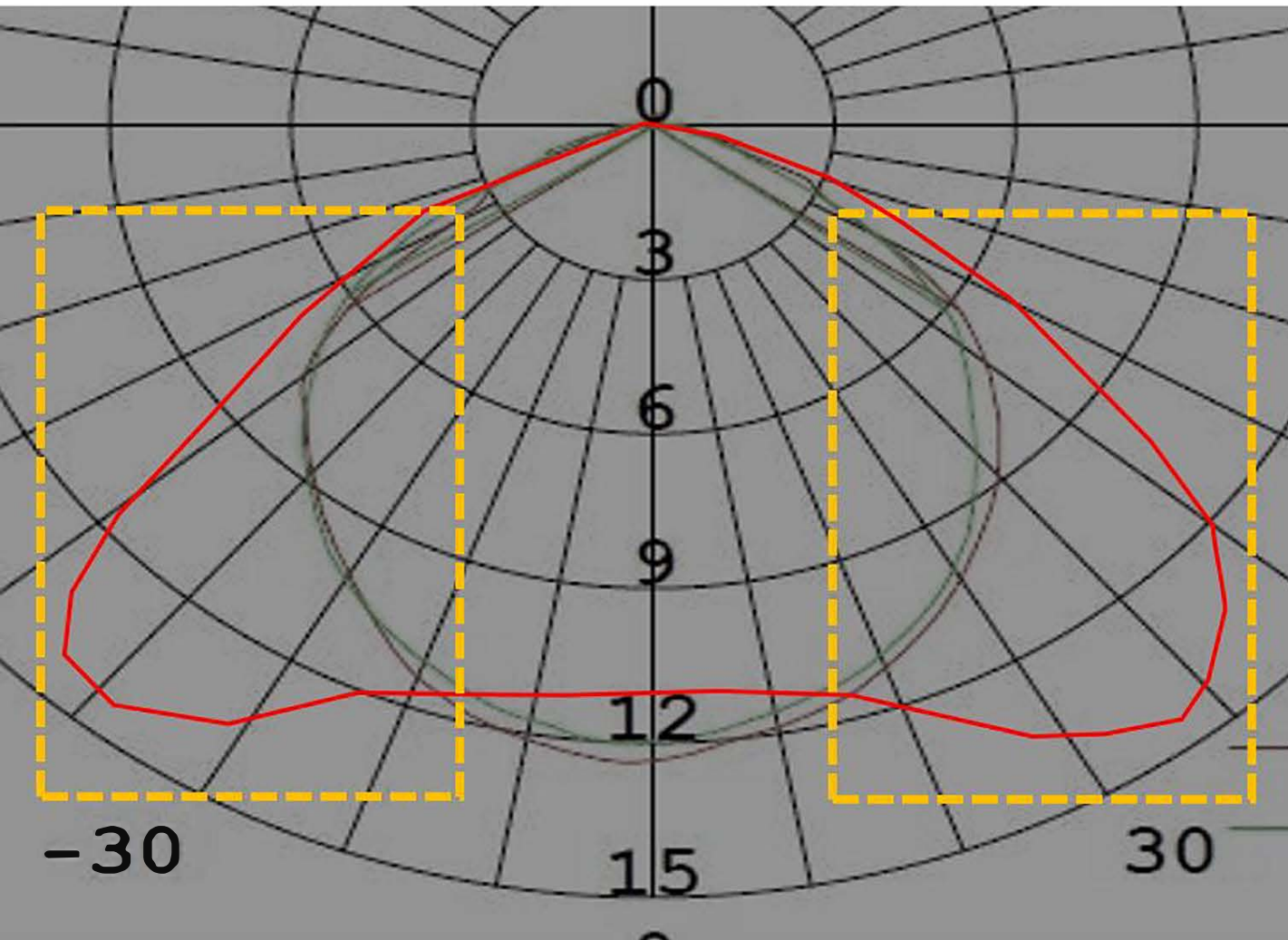


LED Point Light Technical Parameters

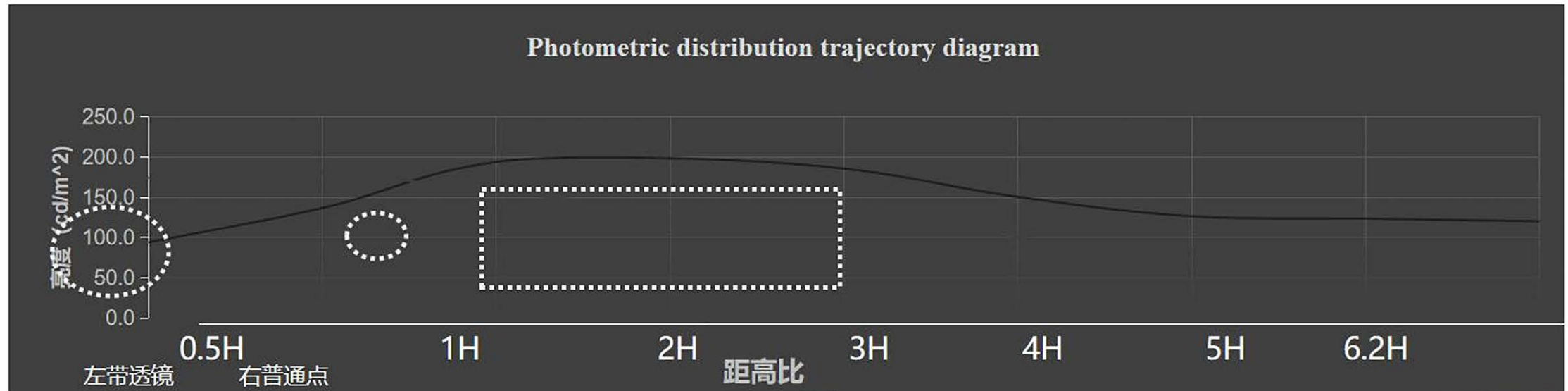




LED Point Light Technical Parameters



LED Point Light Technical Parameters



Within 1x distance-to-height ratio: lower brightness, reducing glare.



1.5 times distance to height ratio: brightness turning point, brightness increases.

